

148 AUG 2003

# PRAVIN MEHTA AND MITHI & CO. (REGD.)

ADVOCATES, SOLICITORS & NOTARY

## PARTNERS

PRAVIN H. MEHTA  
YUSUF H. MITHI ★  
SHARAD V. KALYANI  
NASEEM PATRAWALA

★ NOTARY

Regd. Office : 7, Hind Rajasthan Chambers,  
6, Oak Lane, Fort, Mumbai - 400 023.  
E-mail : pmmandco@bom8.vsnl.net.in  
Tel. : 2267 5320 / 5635 4855  
Telefax : 2267 4545

## OFFICE

4th Floor, Oricon House,  
12/14, K. Dubash Marg,  
Mumbai - 400 023.  
Phone : 2284 2603  
5635 4860  
Telefax : 2284 0810  
Email : pmmithi@rediffmail.com

Ref. No.

YHM/O/ 2078 /2003

9th August, 2003

To,

1. M/s. Growmore Exports Pvt. Ltd.,  
1207, Maker Chambers V,  
221, Nariman Point, Mumbai 400 021.
2. Mr. Ashwin Shantilal Mehta,  
32, Madhuli, Dr. Annie Besant Road,  
Worli, Mumbai 400 018  
and  
1206, Maker Chambers V,  
221, Nariman Point, Mumbai 400 021.
3. M/s. Fortune Holdings Pvt. Ltd.  
1018, Maker Chambers V,  
221, Nariman Point, Mumbai 400 021.
4. (a) Mrs. Jyoti H. Mehta,  
(b) Mrs. Rasila S. Mehta, and  
(c) Mr. Aatur H. Mehta,  
  
all residing at 32, Madhuli,  
Dr. Annie Besant Road,  
Worli, Mumbai 400 018  
and their office at  
1205, Maker Chambers V,  
221, Nariman Point, Mumbai 400 021.
5. M/s. Growmore Research & Assets  
Management Pvt. Ltd.,  
1217, Maker Chambers V,  
221, Nariman Point, Mumbai 400 021.
6. M/s. Growmore Leasing & Investments  
Management Pvt. Ltd.,  
1217, Maker Chambers V,  
221, Nariman Point, Mumbai 400 021.
7. M/s. Oricon Travels Pvt. Ltd.,  
1505, Maker Chambers V,  
221, Nariman Point, Mumbai 400 021.
8. M/s. Cascade Holdings Pvt. Ltd.,  
610, Maker Chambers V,  
221, Nariman Point, Mumbai 400 021.
9. M/s. Harsh Estates Pvt. Ltd.  
1518, Maker Chambers V,  
221, Nariman Point, Mumbai 400 021.
10. M/s. Aatur Holdings Pvt. Ltd.,  
1205-06, Maker Chambers V,  
221, Nariman Point, Mumbai 400 021.
11. Commissioner of Income Tax,  
Central - II,  
Aayakar Bhavan, Mumbai 400 020.

Madam/Dear Sirs,

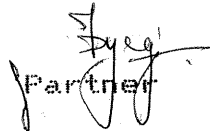
Re: Before the Special Court at Mumbai  
Chamber Summons No.2 of 2003  
in  
Misc. Petition No. 4 of 2001  
The Custodian ...Petitioner  
Versus  
M/s. Growmore Exports  
Pvt. Ltd. & Ors. ...Respondents

---

Pursuant to the order dated 25th July, 2003 passed by His Lordship the Hon'ble Mr. Justice D. K. Deshmukh, we have carried the said amendments in red ink.

We enclose herewith an amended copy of the Petition as and by way of service upon you in the matter.

Yours faithfully,  
For Pravin Mehta and Mithi & Co.,

  
Partner

Encl : As above.

zag.

*Amended copy*

18 AUG 2003

BEFORE THE SPECIAL COURT CONSTITUTED UNDER  
THE SPECIAL COURT (TRIAL OF OFFENCES RELATING  
TO TRANSACTIONS IN SECURITIES) ACT, 1992

MISCELLANEOUS PETITION NO. *4* OF 2001

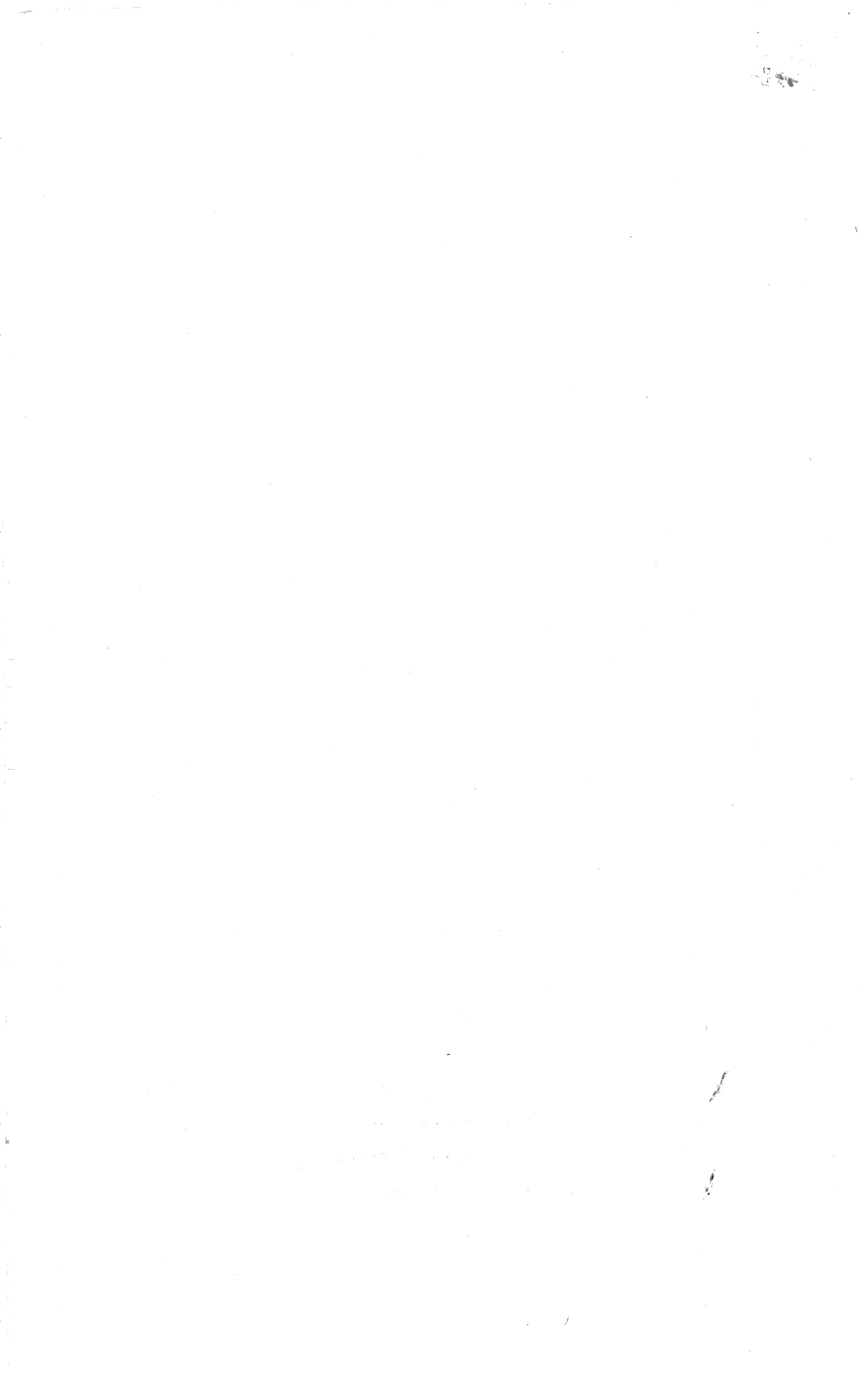
CUSTODIAN ..PETITIONER

VERSUS

M/S. GROWMORE EXPORTS PVT. LTD. ..RESPONDENTS

I N D E X

SR. NO.	PARTICULARS	PAGE NOS.
1.	Petition	1-12
2.	Memorandum of Appearance	13
3.	Memorandum of Registered Address.	14
4.	List of documents	15
5.	<u>EXHIBIT - 'A'</u> List of properties of the Harshad Mehta Group.	16
6.	<u>EXHIBIT - 'B'</u> Copy of affidavit dated 19th January, 2000 of Respondent No.11.	17-35
7.	<u>EXHIBIT - 'C-1' to 'C-7'</u> Statements showing shareholdings etc received by Companies.	36-42
8.	<u>EXHIBIT - 'D' and 'E'</u> Details of Expenses.	43-44



Amended this 7th day of August 2003  
Pursuant to the order passed by His  
Lordship ~~Mr.~~ Mr. Justice D.K. Deshmukh

on 21/7/2003.  
BEFORE THE SPECIAL COURT CONSTITUTED UNDER  
THE SPECIAL COURT (TRIAL OF OFFENCES RELATING  
TO TRANSACTIONS IN SECURITIES) ACT, 1992

MISCELLANEOUS PETITION NO. Y

OF 2001 For officer on  
SPL. DUTY  
SPL. COURT.

Custodian appointed under the Special )  
Court (Trial of Offences Relating to )  
Transactions in Securities) Act, 1992 )  
and having his office at 9th Floor, )  
Nariman Bhavan, Nariman Point, Mumbai )  
- 400 021 ) ..Petitioner

Versus

1. Growmore Exports Pvt. Ltd. having )  
its office at 1207 Maker Chambers V, )  
221, Nariman Point, Mumbai - 400 021 )

2. Ashwin Shantilal Mehta residing at )  
32, Madhuli, Dr. Annie Besant Road, )  
Worli, Mumbai - 400 018 and having his )  
office at 1206 Maker Chambers V, )  
221, Nariman Point, Mumbai - 400 021 )

3. Fortune Holdings Pvt. Ltd. having )  
its office at 1018 Maker Chambers V, )  
221, Nariman Point, Mumbai - 400 021 )

4(a) Mrs. Jyoti H. Mehta,

4(b) Mrs. Rasila S. Mehta,

4(c) Mr. Aatur H. Mehta.

- office at 1205 Maker Chambers V, )  
221, Nariman Point, Mumbai - 400 021 )
5. Growmore Research and Assets )  
Management Pvt. Ltd. having its office )  
at 1217 Maker Chambers V, 221, )  
Nariman Point, Mumbai - 400 021 )
6. Growmore Leasing & Investments )  
Pvt. Ltd. having its office at 1417/18 )  
Maker Chambers V, 221, Nariman Point, )  
Mumbai - 400 021 )
7. Orion Travels Pvt. Ltd. having )  
its office at 1505 Maker Chambers V, )  
221, Nariman Point, Mumbai - 400 021 )
8. Cascade Holdings Pvt. Ltd. having )  
its office at 610 Maker Chambers V, )  
221, Nariman Point, Mumbai - 400 021 )
9. Harsh Estates Pvt. Ltd. having )  
its office at 1518 Maker Chambers V, )  
221, Nariman Point, Mumbai - 400 021 )
10. Aatur Holdings Pvt. Ltd. having )  
its office at 1205-6 Maker Chambers V, )  
221, Nariman Point, Mumbai - 400 021 )
11. Commissioner of Income Tax, Central )  
-II, having his office at Aayakar )  
Bhavan, Mumbai - 400 020 )
- ) ... Respondents

TO

THE HON'BLE JUDGE APPOINTED UNDER THE  
SPECIAL COURT (TRIAL OF OFFENCES RELATING  
TO TRANSACTIONS IN SECURITIES) ACT, 1992

THE HUMBLE APPLICATION OF  
THE APPLICANT ABOVE NAMED;

MOST RESPECTFULLY SHEWETH;

1. The Petitioner is the Custodian appointed under the provisions of the Special Court (Trial of Offences Relating to Transactions in Securities) Act, 1992 (hereinafter referred to as the "said Act"). The Respondent Nos. 1 to 10<sup>and 4A, B, C</sup> are persons/entities notified under the provisions of the said Act. Accordingly all properties belonging to Respondent Nos. 1 to 10 stand

*Rides AF*

of Respondent No.4, Mr. Harshad S. Mehta died at the Mumbai on 31st December, 2001 leaving Respondent Nos. 4(a) to 4(c) as his legal heirs and the representatives. Respondent Nos. 4(a) to 4(c) now and represent the estate of deceased Harshad S. Mehta. es.

indulged in by some brokers in collusion with employees of various Banks and Financial Institutions. The irregularities and malpractices led to the diversion of funds from Banks and Financial Institutions to the individual accounts of the brokers. To deal with the situation, to ensure speedy recovery of huge amounts involved, to punish the guilty and restore confidence and maintain the basic integrity and credibility of the

Banks and Financial Institutions, the said Act was enacted.

4. The Respondent Nos. 1 to 10 were notified as it was found on the basis of information received that they were involved in offences relating to transaction in securities. Their properties were attached as and from 8th June, 1992. The properties which were attached include various immovable properties belonging to Respondent Nos. 1 to 10 <sup>and 4A, B, C.</sup>

5. A list of immovable properties of the Respondent No. 1 to 10 <sup>and 4A, B, C</sup> which form the subject matter of the present petition is contained in a schedule annexed hereto and marked as Exhibit A.

6. It will be clear from a perusal of the Janakiraman Committee, Joint Parliamentary Committee and Inter Disciplinary Group Reports, that the Respondent Nos. 1 to 10 <sup>and 4A, B, C</sup> herein were interalia responsible for diverting large sums of moneys from various Banks and Financial Institutions to themselves and to various entities owned and controlled by them. The claims of the Banks and Financial Institutions against the Harshad Mehta Group as a whole including Respondent Nos. 1 to 10 <sup>and 4A, B, C</sup> exceeds Rs. 1239 crores. The Petitioner craves leave to refer to and rely upon the copies of the said reports when produced.

7. Apart from the aforesaid, the claims of the Respondent No. 11 towards the Income Tax dues of the Respondent Nos. 1 to 10 <sup>and 4A, B, C</sup> exceeds Rs. 6787 crores. A copy of an affidavit dated 19th January, 2000 filed by the



Respondent No. 11 in this Hon'ble Court in Misc. Petition No. 64 of 98 showing the Income Tax outstandings of the Respondent Nos. 1 to 10<sup>and 4a,b,c</sup> is annexed hereto and marked as Exhibit 'B'.

8. Apart from the aforesaid, it is respectfully submitted that this Hon'ble Court has by its orders dated 3rd August, 1993 passed in Misc. Application Nos. 149 of 1993, 146 of 1993, 150 of 1993, 127 of 1993, 129 of 1993, 151 of 1993, 148 of 1993, 134 of 1993, 128 of 1993 and 142 of 1993 directed the concerned Respondent Nos. 1 to 10<sup>and 4a,b,c</sup> to disclose all properties belonging to them wherever situated. Thereafter three firms of Chartered Accountants were appointed by this Hon'ble Court for examination of accounts of Respondent Nos. 1 to 10<sup>and 4a,b,c</sup>. The Petitioner craves leave to refer to and rely upon copies of the orders when produced. The Respondent Nos. 1 to 10 were consistently in default in filing their accounts with the said Chartered Accountants for re-examination. As a result of which the Petitioner was constrained to file Misc. Application No. 47 of 1996 in this Hon'ble Court. The Respondent Nos. 2, 4, 5 and 6 undertook to furnish the relevant accounts to the said Chartered Accountants between March and September, 1997. The Petitioner craves leave to refer to and rely upon a copy of the order dated 4th February, 1997 passed by this Hon'ble Court. The Respondent Nos. 2, 4<sup>a,b,c</sup> and 5 are yet to furnish the accounts to the said Chartered Accountants. The Petitioner has, therefore, filed Contempt Petition No. 117 of 2000 which is pending in this Hon'ble Court. The

Petitioner craves leave to refer to and rely upon the copy of the said petition when produced. In so far as the Respondent Nos. 1, 3, 6, 7, 8 and 9 are concerned, their accounts have been re-examined by the said Chartered Accountants which interalia reflected that the said companies were nothing but fronts for notified parties viz, Shri Harshad S. Mehta, Shri Ashwin S. Mehta, Shri Sudhir S. Mehta and Smt. Jyoti H. Mehta. The shares in the said companies were held entirely by the individual notified parties of the Harshad Mehta Group and their relatives. It was also observed that the said companies were entirely controlled by the individual notified parties as the funds received by the companies were from the individual notified parties. Annexed and marked Exhibits 'C1 to C7' are statements showing the share holding in each of the said companies, loans and advances received by the companies from the notified parties. From the said reports, it is seen that even the share transactions were carried out by these companies through M/s. Harshad S. Mehta, M/s. Ashwin S. Mehta and M/s. Jyoti H. Mehta and various irregularities have been noticed by the said Chartered Accountants in their reports. Some of which are enumerated hereinbelow:

- 1) The funds for meeting the operating expenses of companies were financed by M/s. Harshad S. Mehta, M/s. Ashwin S. Mehta and M/s. Jyoti H. Mehta. These entities refused to certify that the funds advanced to the companies were out of their own funds and not out of borrowed funds.

- 2) The companies purchased and sold shares, debentures and other securities through the broking firms of M/s. Harshad S. Mehta, M/s. Ashwin S. Mehta and M/s. Jyoti H. Mehta. The entries for the purchase and sale were recorded in the books of accounts by way of journal entries with debit and credit to the respective broker's accounts. There is neither inflow nor outflow of funds in respect of transactions in the records of the companies and heavy balances are reflected in the investment account which is shown as either receivable or payable to these broking firms.
  
- 3) The entries in the investment accounts are on the basis of bills received from the broking firms of M/s. Harshad S. Mehta, M/s. Ashwin S. Mehta and M/s. Jyoti H. Mehta, which were not supported by relevant contract notes. Some of the contracts entered into by the companies/broking firms were void contracts.
  - (a) Harshad S. Mehta contended that the Hon'ble Special Court had not appointed the 3 firms of Chartered Accountants to determine the legality of the transactions or otherwise of the transactions.
  
4.
  - (a) Variations were noticed between rates quoted at Stock Exchange and those mentioned in contract notes.

(b) There are various transactions which had been entered into at rates which differ by more than 5% from the official rates of the Stock Exchange.

5. Distinctive Numbers of shares purchased and sold and proof for delivery of shares received or given were not kept on record.
6. In many cases vouchers alongwith supporting bills, invoices, challans were not furnished to the Chartered Accountants. Even shares and debentures which were in the custody of companies were not furnished to the Chartered Accountants for physical verification.
7. The transactions of loans and advances were not supported by documentary evidence but were based on oral agreements between the parties.
8. Many shares stated to be purchased through broking firms of M/s. Jyoti H. Mehta before the date of notification were not delivered to the companies till date.
9. Relevant information for verification of assets and liabilities of the companies was not furnished to the Chartered Accountants.

The Chartered Accountants, in view of the aforesaid irregularities and in the absence of required particulars/documents being furnished to them, have mentioned in their reports that they are unable to

certify the correctness of the assets and liabilities of the Companies as on 8th June, 1992.

The Petitioner craves leave to refer to and rely upon the copies of the said reports when produced. The Chartered Accountants themselves have stated that the corporate veil in respect of these companies ought to be lifted. It is thus submitted that it will be clear that the corporate veil ought to be lifted. The said companies are nothing but fronts of the notified parties. In any event, it is respectfully submitted that the said companies had various outstandings to individual notified entities which are required to be recovered for discharge of their liabilities.

9. It is respectfully submitted that the various office and other premises are owned by the Respondent No. 1 to 10<sup>and 4a,b,c</sup> as per the details given in the schedule annexed hereto and marked Exhibit 'A'. It is submitted that after the notification of the aforesaid Respondents they have ceased to carry on any business and the only work that they were supposed to carry on from these premises was related to transfer of shares and finalisation of the accounts as ordered by this Hon'ble Court. It is submitted that such large premises are not required for the aforesaid work and it will be appropriate to have the premises sold under orders of this Hon'ble Court. It is also significant that in respect of the aforesaid premises, the Petitioner is regularly releasing from attached accounts electricity charges and the society charges every month/quarter and till December, 2000 such expenditure exceed Rs. 36 lacs

in case of the society charges and Rs. 40 lacs in the case of electricity charges. The details of these expenses are contained in a schedule annexed hereto and marked as Exhibit 'D' and Exhibit 'E' respectively. From the quantum of electricity charges set out above, it is clear that the said premises are being misused by the Respondents for other personal purposes and for carrying out other business not permitted under orders of this Hon'ble Court. In any event, it is respectfully submitted that the attached assets are being frittered away for paying electricity charges and society charges and it would be appropriate that the said premises be sold under orders and directions of this Hon'ble Court after retaining some portion thereof for carrying out the work assigned by this Hon'ble Court.

10. In the circumstances set out hereinabove, it is submitted that this Hon'ble Court be pleased to order and permit the Petitioner to sell the properties listed in Exhibit 'A' herein on such terms and conditions as this Hon'ble Court may deem fit and proper.

11. It is respectfully submitted that under the provisions of the said Act, the Petitioner herein is entitled to deal with the attached assets as per the directions of this Hon'ble Court. This Hon'ble Court has exclusive jurisdiction to entertain the present petition.

12. The Petition is verified by Mr. M.P. Furushu, Officer on Special Duty in the Office of the Custodian, who is conversant with the facts of the case and is able

to depose to the same.


13. The Petitioner will rely on documents, a list whereof is annexed.

14. The Petitioner, therefore, prays:

(a) that this Hon'ble Court be pleased to order and permit the Petitioner to sell the properties listed in Exhibit 'A' herein on such terms and conditions as this Hon'ble Court may deem fit and proper;


(b) for costs;

(c) for such further and other reliefs as the nature and circumstances of the case may require.

  
Constituted Attorney  
to the Petitioner.

Application is drawn by  
Mr. Gaurav Joshi  
Advocate,  
High Court, Bombay.

For MESSRS. PRAVIN MEHTA & MITHI & CO.,

  
(PARTNER)  
Advocates for the Petitioner.

RE - VERIFICATION

I, P. Ganagacharan, of Mumbai, Indian Inhabitant and Constituted Attorney of the Custodian do hereby solemnly re-declare what is stated by way of amendment in red ink is true to my own knowledge information and belief and I believe the same to be true.

is stated in paragraphs 1, 2, 3, 4, 5, 6, 7, 8, 12 and 13 is true to my own knowledge and what is stated in paragraphs 9, 10 and 11 is stated on information and belief and I believe the same to be true.

Solemnly declared at Mumbai )  
aforesaid this 13th day of )  
2001. )

*Pravin Mehta*

*M.P. Furushu*

M.P. FURUSHU

Before me,

*M.P. Furushu*

Officer on Special Duty/  
Associate

For M/s. Pravin Mehta & Mithi & Co.

*Pravin Mehta*

(Partner)  
Advocates for the Petitioner.

Solemnly re-declared at Mumbai ]  
aforesaid this 7th day of ]  
August 2003. ]

*Sd/-*

Before me,

*Sd/-*

For PRAVIN MEHTA AND MITHI & CO.,

*Pravin Mehta*

(Partner)  
Advocates for the Custodian



BEFORE THE SPECIAL COURT CONSTITUTED UNDER  
THE SPECIAL COURT (TRIAL OF OFFENCES RELATING  
TO TRANSACTIONS IN SECURITIES) ACT, 1992

MISCELLANEOUS PETITION NO. 4 OF 2001

CUSTODIAN

..PETITIONER

VERSUS

M/S. GROWMORE EXPORTS PVT. LTD.

..RESPONDENTS

LIST OF DOCUMENTS ON WHICH THE PETITIONER WILL RELY

1. Exhibits annexed to the application.
2. Other relevant correspondence prior to the Petition.

For Pravin Mehta & Mithi & Co.



(Partner)

Advocates for the Petitioner.

BEFORE THE SPECIAL COURT CONSTITUTED UNDER  
THE SPECIAL COURT (TRIAL OF OFFENCES RELATING  
TO TRANSACTIONS IN SECURITIES) ACT, 1992

MISCELLANEOUS PETITION NO. *M* OF 2001

CUSTODIAN

..PETITIONER

VERSUS

M/S. GROWMORE EXPORTS PVT. LTD.

..RESPONDENTS

To,  
The Officer on Special Duty,  
Special Court,  
Bombay.

Sir,

BE PLEASED to enter our appearance on behalf of  
The Custodian, the Petitioner in the Captioned matter on  
record.

Dated this *13th* day of *January*, 2001.

Yours faithfully,  
For Pravin Mehta & Mithi & Co.

*[Signature]*  
Partner  
Advocates for the Petitioner.

BEFORE THE SPECIAL COURT CONSTITUTED UNDER  
THE SPECIAL COURT (TRIAL OF OFFENCES RELATING  
TO TRANSACTIONS IN SECURITIES) ACT, 1992

MISCELLANEOUS PETITION NO. *M* OF 2001

CUSTODIAN

..PETITIONER

VERSUS

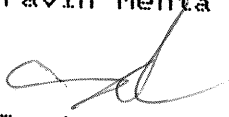
M/S. GROWMORE EXPORTS PVT. LTD.

..RESPONDENTS

MEMORANDUM OF REGISTERED ADDRESS OF THE PETITIONER

THE CUSTODIAN,  
C/o M/s. Pravin Mehta & Mithi & Co.,  
4th floor, Oricon House,  
12/14, K.Dubash Road,  
Rampart Row, Fort,  
MUMBAI-400 001.

for M/s. Pravin Mehta & Mithi & Co.,

  
(Partner)

Advocates for the Petitioner.



Exhibit 'A'

DETAILS OF IMMOVABLE PROPERTIES OF HARSHAD MEHTA GROUP

<u>SL. NO.</u>	<u>NAME OF THE NOTIFIED PARTY</u>	<u>NATURE OF PROPERTY</u>	<u>AREA</u>
1	CASCADE HOLDINGS PVT LTD	Office property at 610 Maker Chambers V, 221, Nariman Point, Mumbai	600 Sq. Ft.
2	FORTUNE HOLDINGS PVT LTD	Office property at 1018 Maker Chambers V, 221, Nariman Point, Mumbai	775 Sq. Ft.
3	HARSHAD SHANTILAL MEHTA	Office property at 1205 Maker Chambers V, 221, Nariman Point, Mumbai	775 Sq. Ft.
4	ASHWIN SHANTILAL MEHTA	Office property at 1206 Maker Chambers V, 221, Nariman Point, Mumbai	775 Sq. Ft.
5	GROWMORE EXPORTS LTD	Office property at 1207 Maker Chambers V, 221, Nariman Point, Mumbai	475 Sq. Ft.
6	GROWMORE RESEARCH & ASSETS MANAGEMENT LTD	Office properties 1) 1217 Maker Chambers V, 221, Nariman Point, Mumbai	775 Sq. Ft.
7		2) 4 Letin Chambers, Dalal Street, Mumbai	841 Sq. Ft.
8	GROWMORE LEASING & INVESTMENTS LTD	Office property at 1417 Maker Chambers V, 221, Nariman Point, Mumbai	775 Sq. Ft.
9	GROWMORE LEASING & INVESTMENTS LTD	Office property at 1418 Maker Chambers V, 221, Nariman Point, Mumbai	775 Sq. Ft.
10	ORION TRAVELS PVT LTD	Office property at 1505 Maker Chambers V, 221, Nariman Point, Mumbai	775 Sq. Ft.
11	HARSH ESTATES PVT LTD	Office properties 1) 1518 Maker Chambers V, 221, Nariman Point, Mumbai	775 Sq. Ft.
12		2) 301, 302 303, Raheja Towers, Bangalore	4340 Sq. Ft.
13	HARSHAD S. MEHTA	Gurukripa Building 5 storey building (Ground + 5 storey) 5- Sandhurst Road (West), Mumbai	715.19 Sq. mts.
14	HARSH ESTATES PVT LTD	Residential flats No. 101 & 201 C Wing, Highland Court, Bandra, Mumbai	101/841 Sq. Ft. 201/841 Sq. Ft.
15	AATUR HOLDINGS PVT LTD	Residential flats No. 501-B Wing & 202-C Wing, Highland Court Bldg., Mumbai	501/841 Sq. Ft. 202/852 Sq. Ft.
16	CASCADE HOLDINGS PVT LTD	Residential flats 61A & 61B in Gulmohar at Khar, Mumbai	1500 Sq. Ft.
17	304 Late Mr. Harshad S. Mehta.	C-2, Saket Complex, Thane Area - 638 sq. ft.	
18	202 M/s. Aatur Holdings Pvt. Ltd.	Arunachal, Delhi. Area - 715 sq. ft.	

*meant to be*

*W3*

*Rider's*



(17)

**BEFORE THE SPECIAL COURT CONSTITUTED UNDER THE  
SPECIAL COURT (TRIAL OF OFFENCES RELATING TO  
TRANSACTIONS IN SECURITIES)  
ACT, 1992, AT MUMBAI.**

MISC. PETITION NO.64 OF 1998

The Custodian	:-	Petitioner
Union of India and Others	-	Respondents

**AFFIDAVIT**

1. I, P.R. Dhayal, Additional Commissioner of Income-tax, Central Range-7 in the charge of the Commissioner of Income-tax, Central-II, Mumbai, having my office at 7th Floor, Old C.G.O. Building Complex Annexe, Maharishi Karve Road, Mumbai-400 020, do hereby solemnly affirm and state as under :
  2. That the Honourable Special Court in its order dated 24th November, 1999 in Misc. Petition No.64 of 1998 filed by the Custodian, directed the Income-tax Department to file a short affidavit enclosing the statement indicating the matters in which the assessments have become finalised. It was also required to be indicated in the statement whether the assessee had preferred any appeal to the appellate authorities. The statement is also to indicate whether the appellate authority has granted stay in any of the assessment proceedings. Lastly, the Income-tax Department is also required to annexe the statement indicating payment, if any, made by the assessee against the demand raised by the Income-tax Department. The affidavit is to cover the cases of all notified parties who are party respondents to the Miscellaneous Petition No.64 of 1998.
  3. It is humbly submitted that the Respondents, namely Dhanraj Mills Pvt. Ltd. and Harshad Mehta Group had raised the contentions that the liabilities of the notified parties have not been finalised/ascertained. It is urged that even the Income-tax liabilities for the assessment years 1992-93 & 1993-94 (Part) have not been finalised and the appeals before the various authorities are not finalised. It was also urged that in large number of matters, the notified parties have discharged their liabilities and that no amount is payable to the Income-tax Department.
  4. It is humbly stated that the assessments for assessment years 1992-93 and 1993-94 have been finalised in the cases of the notified persons by the assessing officers working in the charge of Commissioner of Income-tax, Central-II, Mumbai. It is further stated that on finalisation of the assessments of these two assessment years of which the statutory period (1.4.91 to 6.6.92) forms part, the income tax liabilities of the statutory period have been finally determined and ascertained in the cases
- ...2...

of all the notified persons over whom the assessing officers in the charge of Commissioner of Income-tax, Central-II, hold jurisdiction.

18

5. It is humbly submitted that the notified persons preferred appeals against the assessment orders for assessment years 1992-93 and 1993-94, wherever applicable, before the Commissioner of Income-tax (Appeals) which are pending in most of the cases. It is further stated that in some cases appeals at the level of Commissioner (Appeals) have been decided and are at present pending before the Income-tax Appellate Tribunal. Particulars of the appeals pending before the Commissioner (Appeals) and I.T.A.T. are incorporated in a statement annexed to this affidavit.

6. It is stated that in none of the cases of the notified parties any stay has been granted for the assessment years 1992-93 and 1993-94 by any of the appellate authorities.

7. It is stated that in some cases part recovery was made from the notified persons for the priority income-tax demand by virtue of the directions and order of the honourable Supreme Court and otherwise.

8. It is further submitted and stated that assessments for the assessment years 1992-93 and 1993-94 (which are relevant for the statutory period 1.4.91 to 6.6.92) have also been finalised and the Income-tax liability including interest and have been finally determined and ascertained and the tax liability and interest so determined are also payable by the notified persons, though not falling in the category of 'priority demand' as held by the Hon'ble Supreme Court. It is further submitted that appeals for these assessment years are also pending at the level of Commissioner (Appeals) or the Income-tax Appellate Tribunal as the case may be.

*marked as exhibit 'A'*

Exh- A

9. It is submitted that a statement in the form of an annexure, is hereby enclosed to this affidavit which contains all the details and information directed to be submitted by this Honourable Special court. The statement indicates the position of assessments made stage of appeals including outstanding liabilities of Income-tax, interest and penalty including the priority income-tax demand and the collections/recovery made so far in each case. The statement contains the above information about 30 notified persons, whose names are as under :

1. Ashwin S. Mehta
2. Deepika A. Mehta
3. Harshad S. Mehta
4. Hitesh S. Mehta

...3...



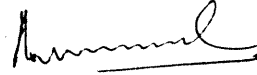
: 3 :

5. Jyoti H. Mehta
6. Pratima H. Mehta
7. Sudhir S. Mehta
8. Fortune Holdings Pvt.Ltd.
9. Velvet Holdings Pvt. Ltd.
10. Zest Holdings Pvt. Ltd.
11. Aatur Holdings Pvt.Ltd.
12. Sunrise Enterprises
13. Cascade Holdings Pvt.Ltd.
14. Eminent Holdings Pvt. Ltd.
15. Topaz Holdings Pvt. Ltd.
16. Pallavi Holdings Pvt. Ltd.
17. Divine Holdings Pvt. Ltd.
18. Treasure holdings Pvt.Ltd.
19. Growmore Exports Pvt. Ltd.
20. Growmore Leasing & Asset Mangement Ltd.
21. Growmore Research & Asset Management Ltd.
22. Harsh Estate
23. Orion Travel Pvt. Ltd.
24. Bhupen C. Dalal
25. Hiten P. Dalal
26. S. Ramaswamy
27. T.B. Ruia
28. J.P. Gandhi
29. A.D. Narottam

30. Dhanraj Mills Pvt. Ltd.

Solemnly affirmed at

Mumbai, on this 19<sup>th</sup> day of January, 2000.



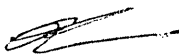
DEPONENT

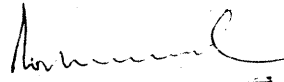
VERIFICATION

I, P.R. Dhayal, Addl. Commissioner of Income-tax, Central Range-7, Mumbai having my office at Old C.G.O. Building, M.K. Road, Mumbai-20, do solemnly affirm and state that the statements in paras 1 to 9 of the above affidavit are based on the information as available on the records of my office and I believe the same to be true.

Solemnly affirmed at

Mumbai, on this 19<sup>th</sup> day of January, 2000.

  
(R.N. Bandyopadhyay)  
Central Govt. Advocate



DEPONENT

Before me

Ass. Year	Total Dem	Priority Demand	Demand Paid	St	If any Stage of Appeal	Net Total Demand	Net Priority Demand
<b>ASHWIN S MEHTA</b>							
87-88	129970.00	0.00	0.00	NO	ITAT	129970.00	0.00
88-89	58905.00	0.00	0.00	NO	ITAT	58905.00	0.00
89-90	134522.00	0.00	0.00	NO	ITAT	134522.00	0.00
90-91	876691.00	0.00	0.00	NO	ITAT	876691.00	0.00
91-92	384265281.00	0.00	0.00	NO	CIT (APPEAL)	384265281.00	0.00
92-93	5695342884.00	2476236084.00	102400000.00	NO	CIT (APPEAL)	5592942884.00	2379836084.00
93-94	242988350.00	101735314.00	0.00	NO	CIT (APPEAL)	242988350.00	101735314.00
94-95	156127720.00	0.00	0.00	NO	CIT (APPEAL)	156127720.00	0.00
<b>ASHWIN S MEHTA</b>	<b>6479924323.00</b>	<b>2577971398.00</b>	<b>102400000.00</b>			<b>6377524323.00</b>	<b>2475571398.00</b>
<b>DEEPIKA A MEHTA</b>							
87-88	90150.00	0.00	0.00	NO	ITAT	90150.00	0.00
88-89	705470.00	0.00	0.00	NO	ITAT	705470.00	0.00
89-90	1000926.00	0.00	0.00	NO	ITAT	1000926.00	0.00
90-91	3675004.00	0.00	0.00	NO	ITAT	3675004.00	0.00
91-92	75439147.00	0.00	0.00	NO	CIT (APPEAL)	75439147.00	0.00
92-93	342967473.00	151755543.00	14900000.00	NO	CIT (APPEAL)	328067473.00	136855543.00
93-94	150944663.00	63057803.00	0.00	NO	CIT (APPEAL)	150944663.00	63057803.00
94-95	19103658.00	0.00	0.00	NO	CIT (APPEAL)	19103658.00	0.00
<b>DEEPIKA A MEHTA</b>	<b>593926493.00</b>	<b>214813346.00</b>	<b>14900000.00</b>			<b>579026493.00</b>	<b>199913346.00</b>
<b>HARSHAD S MEHTA</b>							
88-89	27509432.00	0.00	0.00	NO	ITAT	27509432.00	0.00
89-90	91763682.00	0.00	0.00	NO	PARTIALLY SET ASIDE	91763682.00	0.00
<b>HARSHAD S MEHTA</b>	<b>8705781563.00</b>	<b>2792784744.00</b>	<b>117300000.00</b>			<b>8588481563.00</b>	<b>2675484744.00</b>

14-953

21

Ass. Year	Total Demand	Priority Demand	Demand Paid	Stay if any Stage of Appeal	Net Total Demand	Net Priority Demand
90-91	1512657633.00	0.00	0.00	NO	1512657633.00	0.00
91-92	8977456575.00	0.00	0.00	NO	8977456575.00	0.00
92-93	25850642322.00	179409712.00	343900000.00	NO	25506742322.00	10895509712.00
93-94	14869225854.00	971860.00	0.00	NO	14869225854.00	6246971860.00
94-95	203256940.00	0.00	0.00	NO	203256940.00	0.00
BLOCK	3043778000.00	0.00	0.00	NO	3043778000.00	0.00
<b>HARSHAD S MEHTA</b>	<b>56576290438.00</b>	<b>17486381572.00</b>	<b>343900000.00</b>		<b>54232390438.00</b>	<b>17142481572.00</b>
<b>HITESH S MEHTA</b>						
87-88	12712.00	0.00	0.00	NO	12712.00	0.00
88-89	25899.00	0.00	0.00	NO	25899.00	0.00
89-90	29718.00	0.00	0.00	NO	29718.00	0.00
90-91	1120221.00	0.00	0.00	NO	1120221.00	0.00
91-92	60012418.00	0.00	0.00	NO	60012418.00	0.00
92-93	209713703.00	111156513.00	41500000.00	NO	209713703.00	69556513.00
93-94	238021137.00	99917071.00	0.00	NO	238021137.00	99917071.00
94-95	34868768.00	0.00	0.00	NO	34868768.00	0.00
<b>HITESH S MEHTA</b>	<b>565304576.00</b>	<b>211073584.00</b>	<b>41500000.00</b>		<b>543804576.00</b>	<b>169573584.00</b>
<b>JYOTI H MEHTA</b>						
88-89	1186766.00	0.00	0.00	NO	1186766.00	0.00
89-90	341774.00	0.00	0.00	NO	341774.00	0.00
90-91	780582.00	0.00	0.00	NO	780582.00	0.00
91-92	50227421.00	0.00	0.00	NO	50227421.00	0.00
92-93	4493129913.00	2265698813.00	710500000.00	NO	4493129913.00	1555198813.00
93-94	666259784.00	279941086.00	0.00	NO	666259784.00	279941086.00
<b>68479456101.00 23035879799.00 1213200000.00</b>						
<b>67266256101.00 21822679799.00</b>						

Ass. Year      Total Demand      Priority Demand      Demand Paid      Stay if any Stage of Appeal      Net Total Demand      Net Priority Demand

94-95	321584031.00	0.00	0.00	NO	CIT (APPEAL)	321584031.00	0.00
<b>JYOTI H MEHTA</b>	<b>6244010271.00</b>	<b>2545639899.00</b>	<b>710500000.00</b>			<b>5533510271.00</b>	<b>1835139899.00</b>
<b>PRATIMA H MEHTA</b>							
88-89	23384.00	0.00	0.00	NO	-	23384.00	0.00
89-90	127989.00	0.00	0.00	NO	ITAT	127989.00	0.00
90-91	485828.00	0.00	0.00	NO	ITAT	485828.00	0.00
91-92	70330632.00	0.00	0.00	NO	CIT (APPEAL)	70330632.00	0.00
92-93	458362866.00	202815462.00	18300000.00	NO	CIT (APPEAL)	440062866.00	184515462.00
93-94	96602531.00	40490544.00	0.00	NO	CIT (APPEAL)	96602531.00	40490544.00
94-95	23994430.00	0.00	0.00	NO	CIT (APPEAL)	23994430.00	0.00

<b>PRATIMA H MEHTA</b>	<b>649927660.00</b>	<b>243306006.00</b>	<b>18300000.00</b>			<b>631627660.00</b>	<b>225006006.00</b>
<b>SUDHIR S MEHTA</b>							
87-88	190620.00	0.00	0.00	NO	ITAT	190620.00	0.00
88-89	296055.00	0.00	0.00	NO	ITAT	296055.00	0.00
89-90	958074.00	0.00	0.00	NO	ITAT	958074.00	0.00
90-91	3294835.00	0.00	0.00	NO	ITAT	3294835.00	0.00
91-92	113521144.00	0.00	0.00	NO	CIT (APPEAL)	113521144.00	0.00
92-93	696513389.00	302831919.00	20300000.00	NO	CIT (APPEAL)	676213389.00	282531919.00
93-94	104953092.00	44097938.00	0.00	NO	CIT (APPEAL)	104953092.00	44097938.00
94-95	48406236.00	0.00	0.00	NO	CIT (APPEAL)	48406236.00	0.00
BLOCK	1437054782.00	0.00	0.00	NO	ITAT	1437054782.00	0.00
<b>SUDHIR S MEHTA</b>	<b>2405188227.00</b>	<b>346929857.00</b>	<b>20300000.00</b>			<b>2384888227.00</b>	<b>326629857.00</b>

**GRAND TOTAL :      71534571988.00      23626115662.00      1251800000.00      70282771988.00      22374315662.00**

23

**M/S. FORTUNE HOLDING PVT. LTD. :-**

A. Yr.	Total Demand	Priority Demand	Demand Paid	Stay if any	Stage of appeal	Net Total Demand	Net Priority Demand
91-92	19,531,156	Nil	-	-	CIT(A)	19,531,156	Nil
91-92	100,000	Nil	-	-	CIT(A)	100,000	Nil
92-93	33,941,835	15,068,215	-	-	CIT(A)	33,941,835	15,068,215
93-94	81,759,161	36,17,20	-	-	CIT(A)	81,759,161	36,176,620
91-92	25,926,336	Nil	-	-	CIT(A)	25,926,336	Nil
92-93	40,000	Nil	-	-	CIT(A)	40,000	Nil
94-95	5,365,654	Nil	-	-	CIT(A)	5,365,654	Nil
TOTAL	166,664,142	51,244,835	-	-		166,664,142	51,244,835

**M/S. VELVET HOLDING PVT. LTD. :-**

A. Yr.	Total Demand	Priority Demand	Demand Paid	Stay if any	Stage of appeal	Net Total Demand	Net Priority Demand
93-94	1,117,522	581,892	-	-	CIT(A)	1,117,522	581,892
TOTAL	1,117,522	581,892	-	-		1,117,522	581,892

**M/S. ZEST HOLDING PVT. LTD. :-**

A. Yr.	Total Demand	Priority Demand	Demand Paid	Stay if any	Stage of appeal	Net Total Demand	Net Priority Demand
94-95	1,755,034	769,752	-	-	CIT(A)	1,755,034	769,752
92-93	6,313,868	1,688,200	-	-	CIT(A)	6,313,868	1,688,200
TOTAL	8,068,902	2,457,952	-	-		8,068,902	2,457,952

24

**M/S. AAIUR HOLDING PVT. LTD. :-**

A. Yr.	Total Demand	Priority Demand	Demand Paid	Stay if any	Stage of appeal	Net Total Demand	Net Priority Demand
88-89	541	Nil	-	-		541	Nil
89-90	38,997	Nil	-	-	CIT(A)	38,997	Nil
91-92	6,596,326	Nil	-	-	CIT(A)	6,596,326	Nil
90-91	100,000	Nil	-	-	CIT(A)	100,000	Nil
92-93	100,000	Nil	-	-	CIT(A)	100,000	Nil
92-93	18,629,710	8,298,885	-	-	CIT(A)	18,629,710	8,298,885
93-94	14,020	Nil	-	-	CIT(A)	14,020	Nil
92-93	30,000	Nil	-	-	CIT(A)	30,000	Nil
91-92	8,756,292	Nil	-	-	CIT(A)	8,756,292	Nil
89-90	63,354	Nil	-	-	CIT(A)	63,354	Nil
94-95	1,800,247	Nil	-	-	CIT(A)	1,800,247	Nil
92-93	30,146,655	Nil	-	-	CIT(A)	30,146,655	Nil
TOTAL	66,276,142	8,298,885	-	-		66,276,142	8,298,885

**M/S. SUNRISE ENTERPRISES :-**

A. Yr.	Total Demand	Priority Demand	Demand Paid	Stay if any	Stage of appeal	Net Total Demand	Net Priority Demand
92-93	722,136	-	-	-		722,136	-
93-94	100,000	-	-	-	CIT(A)	100,000	-
93-94	659,698	318,112	-	-	CIT(A)	659,698	318,112
92-93	10,000	-	-	-	CIT(A)	10,000	-
92-93	258,019	22,518	-	-	CIT(A)	258,019	22,518
91-92	172	-	-	-	CIT(A)	172	-
TOTAL	1,750,025	340,630	-	-		1,750,025	340,630

25

**M/S. CASCADE HOLDING PVT. LTD. :-**

A. Yr.	Total Demand	Priority Demand	Demand Paid	Stay if any	Stage of appeal	Net Total Demand	Net Priority Demand
91-92	10,968,804	-	-	-	CIT(A)	10,968,804	-
91-92	100,000	-	-	-	CIT(A)	100,000	-
92-93	1,530,185,184	580,141	48,894,592	-	CIT(A)	1,481,290,592	-
91-92	71,295,677	31,546,760	-	-	CIT(A)	71,295,677	580,149,651
92-93	26,116,224	-	8,705,408	-	CIT(A)	26,116,224	31,546,760
94-95	40,000	-	-	-	CIT(A)	40,000	-
TOTAL	1,650,605,270	611,696,411	57,600,000	-	CIT(A)	11,899,381	-
						1,601,710,678	611,696,411

**M/S. EMINENT HOLDING PVT. LTD. :-**

A. Yr.	Total Demand	Priority Demand	Demand Paid	Stay if any	Stage of appeal	Net Total Demand	Net Priority Demand
97-98	1,579,394	-	-	-	CIT(A)	1,579,394	-
94-95	258,424	-	-	-	CIT(A)	258,424	-
93-94	887,105	467,302	-	-	CIT(A)	887,105	-
TOTAL	2,724,923	467,302	-	-	CIT(A)	2,724,923	467,302
						467,302	467,302

**M/S. TOPAZ HOLDING PVT. LTD. :-**

A. Yr.	Total Demand	Priority Demand	Demand Paid	Stay if any	Stage of appeal	Net Total Demand	Net Priority Demand
93-94	983,615	496,650	-	-	CIT(A)	983,615	496,650
92-93	387,511,251	131,806,548	-	-	CIT(A)	387,511,251	131,806,548
94-95	2,024,868	-	-	-	CIT(A)	2,024,868	-
TOTAL	390,519,734	132,303,198	-	-	CIT(A)	390,519,734	132,303,198

26



**M/S. PALLAVI HOLDING PVT. LTD. :-**

A. Yr.	Total Demand	Priority Demand	Demand Paid	Stay if any	Stage of appeal	Net Total Demand	Net Priority Demand
94-95	1,992,487	-	-	-	CIT(A)	1,992,487	-
92-93	187,762,148	65,651,102	-	-	CIT(A)	187,762,148	65,651,102
TOTAL	189,754,635	65,651,102	-	-		189,754,635	65,651,102

**M/S. DIVINE HOLDING PVT. LTD. :-**

A. Yr.	Total Demand	Priority Demand	Demand Paid	Stay if any	Stage of appeal	Net Total Demand	Net Priority Demand
93-94	298,244	155,296	-	-	CIT(A)	298,244	155,296
94-95	1,882,968	Nil	-	-	CIT(A)	1,882,968	Nil
96-97	344,416	Nil	-	-	CIT(A)	344,416	Nil
TOTAL	2,525,628	155,296	-	-		2,525,628	155,296

**M/S. TREASURE HOLDING PVT. LTD. :-**

A. Yr.	Total Demand	Priority Demand	Demand Paid	Stay if any	Stage of appeal	Net Total Demand	Net Priority Demand
94-95	137,242	-	-	-	CIT(A)	137,242	-
92-93	625,822	246,387	-	-	CIT(A)	625,822	246,387
93-94	782,413	411,689	-	-	CIT(A)	782,413	411,689
TOTAL	1,545,477	658,076	-	-		1,545,477	658,076

27

**M/S. GROWMORE EXPORTS PVT. LTD. :-**

A. Yr.	Total Demand	Priority Demand	Demand Paid	Stay if any	Stage of appeal	Net Total Demand	Net Priority Demand
91-92	3,316,043	Nil	-	-	CIT(A)	3,316,043	Nil
91-92	4,416,000	Nil	-	-	CIT(A)	4,416,000	Nil
90-91	100,000	Nil	-	-	CIT(A)	100,000	Nil
92-93	91,459,852	40,487,272	-	-	CIT(A)	91,459,852	40,487,272
92-93	30,000	Nil	-	-	CIT(A)	30,000	Nil
93-94	1,535,551	6,115	-	-	CIT(A)	1,535,551	6,115
94-95	1,913,448	Nil	-	-	CIT(A)	1,913,448	Nil
92-93	151,161,820	Nil	-	-	CIT(A)	151,161,820	Nil
TOTAL	253,932,714	41,166,687	-	-		253,932,714	41,166,687

**M/S. GROWMORE LEASING AND ASSET MANAGEMENT LTD. :-**

A. Yr.	Total Demand	Priority Demand	Demand Paid	Stay if any	Stage of appeal	Net Total Demand	Net Priority Demand
90-91	14,219,960	Nil	-	-	CIT(A)	14,219,960	Nil
90-91	100,000	Nil	-	-	CIT(A)	100,000	Nil
91-92	290,496,287	Nil	-	-	CIT(A)	290,496,287	Nil
92-93	847,301,049	321,047,104	-	-	CIT(A)	847,301,049	321,047,104
93-94	34,430,030	15,227,477	-	-	CIT(A)	34,430,030	15,227,477
94-95	15,310,103	Nil	-	-	CIT(A)	15,310,103	Nil
91-92	12,074,524	Nil	-	-	CIT(A)	12,074,524	Nil
90-91	26,542,320	Nil	-	-	CIT(A)	26,542,320	Nil
TOTAL	1,240,474,273	336,274,581	-	-		1,240,474,273	336,274,581

20

**M/S. GROWMORE RESEARCH AND ASSET MANAGEMENT LTD :-**

A. Yr.	Total Demand	Priority Demand	Demand Paid	Stay if any	Stage of appeal	Net Total Demand	Net Priority Demand
90-91	51,107,989	Nil	-	-	CIT(A)	51,107,989	Nil
90-91	100,000	Nil	-	-	CIT(A)	100,000	Nil
89-90	6,134,117	Nil	1,089,580	-	CIT(A)	5,044,537	Nil
91-92	805,890,754	Nil	376,909,454	-	CIT(A)	428,981,300	Nil
93-94	206,303,048	77,168,051	-	-	CIT(A)	206,303,048	77,168,051
92-93	2,114,584,255	935,656,150	249,700,642	-	CIT(A)	1,864,883,613	935,656,750
94-95	252,101,124	Nil	-	-	CIT(A)	252,101,124	Nil
TOTAL	3,436,221,287	1,012,824,801	627,699,676	-		2,808,521,611	1,012,824,801

**M/S. HARSH ESTATE :-**

A. Yr.	Total Demand	Priority Demand	Demand Paid	Stay if any	Stage of appeal	Net Total Demand	Net Priority Demand
88-89	225	Nil	-	-	CIT(A)	225	Nil
88-89	450	Nil	-	-	CIT(A)	450	Nil
89-90	40,838	Nil	-	-	CIT(A)	40,838	Nil
91-92	839,385	Nil	-	-	CIT(A)	839,385	Nil
90-91	100,000	Nil	-	-	CIT(A)	100,000	Nil
91-92	100,000	Nil	-	-	CIT(A)	100,000	Nil
92-93	17,931,558	8,111,885	-	-	CIT(A)	17,931,558	8,111,885
93-94	14,766	Nil	-	-	CIT(A)	14,766	Nil
92-93	29,585,655	Nil	-	-	CIT(A)	29,585,655	Nil
92-93	30,000	Nil	-	-	CIT(A)	30,000	Nil
91-92	5,715,839	Nil	-	-	CIT(A)	5,715,839	Nil
91-92	1,114,263	Nil	-	-	CIT(A)	1,114,263	Nil
89-90	62,370	Nil	-	-	CIT(A)	62,370	Nil
TOTAL	55,535,349	8,111,885	-	-		55,535,349	8,111,885

**M/S. ORION TRAVEL PVT. LTD. :-**

A. Yr.	Total Demand	Priority Demand	Demand Paid	Stay if any	Stage of appeal	Net Total Demand	Net Priority Demand
90-91	32,804	-	-	-		32,804	-
91-92	7,576,662	-	-	-	CIT(A)	7,576,662	-
90-91	226,800	-	-	-	CIT(A)	226,800	-
91-92	100,000	-	-	-	CIT(A)	100,000	-
92-93	20,501,500	9,262,775	-	-	CIT(A)	20,501,500	9,262,775
93-94	3,592	-	-	-	CIT(A)	3,592	-
91-92	10,057,536	-	-	-	CIT(A)	30,000	-
92-93	31,538,325	-	-	-	CIT(A)	10,057,536	-
94-95	444,326	-	-	-	CIT(A)	31,538,325	-
TOTAL	70,511,545	9,262,775	-	-	CIT(A)	444,326	-
						70,511,545	9,262,775

**BHUPEN DALAL, DHANRAJ MILLS PVT. LTD. GROUP OF CASES (NOTIFIED)**

A.Y.	Total Demand	Priority Demand	Demand Paid	Stay if any	Stage of Appeal	Net Total Demand	Net Priority Demand
<b>Shri Bhupen C. Dalal :</b>							
90-91	879377617	0	10838030	NO	ITAT	868539617	
92-93	5176630412	2220274930	0	NO	CIT(A)	5176630412	2220274930
88-89	16171275	0	0	NO	ITAT	16171275	
89-90	155465894	0	0	NO	ITAT	155465894	
91-92	8482245	0	0	NO	ITAT	8482245	
93-94	315369514	95397845	0	NO	CIT(A)	315369514	95397845
94-95	597000	0	0	NO	CIT(A)	597000	
84-85	786485	0	0	NO	ITAT	786485	
85-86	2471401	0	0	NO	ITAT	2471401	
86-87	6552051	0	0	NO	ITAT	6552051	
87-88	46656746	0	0	NO	ITAT	46656746	
95-96	1593739	0	0	NO	CIT(A)	1593739	
Block Period	15435498	0	0	NO	CIT(A)	15435498	
1.4.87 - 26.9.97							
<b>TOTAL :</b>	<b>6625539877</b>	<b>2315672781</b>	<b>10838030</b>			<b>6614751877</b>	<b>2315672781</b>

<b>Shri Hiten P. Dalal :</b>							
88-89	192438	0	0	NO	ITAT	192438	
89-90	251531600	0	116622912	NO	ITAT	134908688	
90-91	99784158	0	34777088	NO	ITAT	65007071	
91-92	3932833859	0	0	NO	ITAT	3932833859	
92-93	7915518300	3842417876	0	NO	CIT(A)	7915518300	3842417876

93-94	1865561848	1171639669	0	NO	CIT(A)	1171639669
94-95	44948437	0	0	NO	CIT(A)	44948437
95-96	78575521	0	0	NO	CIT(A)	78575521
<b>TOTAL :</b>	<b>14183946161</b>	<b>50</b>	<b>7545</b>			<b>151400000</b>
						<b>14037546162</b>
						<b>5014057545</b>

Shri S. Ramaswamy :

84-85(Pen)	72396				CIT(A)	72396
89-90	101346114	0	0	NO	CIT(A)	101346114
89-90(Pen)	100000	0	0	NO	CIT(A)	100000
90-91	108916962	0	6980770	NO	CIT(A)	101936192
90-91(Pen)	100000	0	0	NO	CIT(A)	100000
91-92	1035193326	0	0	NO	CIT(A)	1035193326
92-93	4125166710	0	0	NO	CIT(A)	4125166710
93-94	193508859	1494593153	0	NO	CIT(A)	193508859
94-95	51280471	68757774	0	NO	CIT(A)	51280471
95-96	40162305	0	0	NO	CIT(A)	40162305
<b>TOTAL :</b>	<b>5655847143</b>	<b>1563350927</b>	<b>6980770</b>			<b>5648866373</b>
						<b>1563350927</b>

Shri T.B. Ruia :

91-92	87919	0			ITAT	33553
88-89	224506	0	54366	NO	ITAT	142475
89-90	753488	0	82031	NO	ITAT	449680
90-91	94196	0	303808	NO	ITAT	49825
92-93	107616	0	44371	NO	ITAT	47569
93-94	2466176	60047	60047	NO	ITAT	2466176
94-95	316968	1243901	0	NO	ITAT	316968
95-96	481986	0	0	NO	CIT(A)	481986
		0	0	NO	CIT(A)	1243901
		0	0	NO	CIT(A)	316968
		0	0	NO	CIT(A)	481986

32

97-98	34577	0	NO	---	34577	0
96-97	236721	0	NO	CIT(A)	236721	0
98-99	780	0	NO	---	780	0
<b>TOTAL :</b>	<b>3911935</b>	<b>1243901</b>			<b>4260310</b>	<b>1243901</b>

Shri J.P. Gandhi :

85-86	899	0	NO	---	899	0
86-87	7858	0	NO	---	7858	0
89-90	122165179	0	NO	ITAT	121640366	0
91-92	332088757	0	NO	ITAT	332088757	0
90-91	242584735	0	NO	ITAT	242584735	0
88-89	4086598	0	NO	---	4086598	0
92-93	132362042	0	NO	CIT(A)	132362042	56564975
93-94	187992403	0	NO	CIT(A)	187992403	51421289
94-95	34199393	0	NO	CIT(A)	34199393	0
95-96	28147887	0	NO	---	28147887	0
93-94(Pen)	160000000	0	NO	CIT(A)	160000000	0
95-96(Pen)	23300000	0	NO	CIT(A)	23300000	0
96-97	28299738	0	NO	CIT(A)	28299738	0
<b>TOTAL :</b>	<b>1292235439</b>	<b>107986264</b>			<b>1294710676</b>	<b>107986264</b>

Shri A.D. Narottam :

89-90	13788393	0	No	CIT(A)	13788393	0
90-91	116549842	0	No	ITAT	112278266	0
84-85	230	0	No	---	230	0
88-89	26313019	0	No	ITAT	26313019	0
91-92	1607190397	0	No	CIT(A)	1607190397	0
92-93	2990152175	1277842810	No	CIT(A)	2990152175	1277842810
89-90(Pen)	540000	0	No	CIT(A)	540000	0

33

90-91(Pen)	276735	0	0	CIT(A)	276733	0
93-94	261531956	66	1914	CIT(A)	261531956	66171914
94-95	175659717	0	0	CIT(A)	175659717	0
95-96	162480020	0	0	CIT(A)	162480020	0
96-97	157141145	0	0	CIT(A)	157141145	0
<b>TOTAL :</b>	<b>551352027</b>	<b>1344014724</b>	<b>4271576</b>		<b>5507352051</b>	<b>1344014724</b>

7. M/s. Diamond Mills Pvt. Ltd.

91-92	723921466	0	85906000	ITAT	638021466	0
87-88	57899776	0	0	ITAT	57899776	0
88-89	4480529	0	0	ITAT	4480529	0
89-90	280742326	0	0	ITAT	280742326	0
90-91	17473778	0	0	ITAT	17473778	0
92-93	136779254	71239195	0	ITAT	136779254	71239195
91-92(Pen)	100000	0	0	ITAT	100000	0
93-94	135802694	50666392	0	CIT(A)	135802694	50666392
94-95	101618486	0	0	CIT(A)	106018486	0
92-93(Pen)	5000	0	0	---	5000	0
95-96	668615543	0	0	CIT(A)	668615543	0
96-97	97263557	0	0	CIT(A)	97263557	0
<b>TOTAL :</b>	<b>2234219709</b>	<b>121905587</b>	<b>85900000</b>		<b>2143202409</b>	<b>121905587</b>

34







STATEMENT SHOWING SHAREHOLDING PATTERN AND LOANS AND ADVANCES RECEIVED  
AND GIVEN BY GROWMORE EXPORTS PVT. LTD. AS ON 31ST MARCH, 1991,  
31ST MARCH, 1992 AND 8TH JUNE, 1992

	As on 31.3.1991 Rs.	As on 31.3.1992 Rs.	As on 8.6.92 Rs.
A. PAID UP CAPITAL	200	900	900
Names of shareholders and amount of capital subscribed by them			
1. Harshad S. Mehta (Director)	100	100	100
2. Ashwin S. Mehta (Director)	100	100	100
3. Sudhir S. Mehta	-	100	100
4. Hitesh S. Mehta	-	100	100
5. Mrs. Jyoti H. Mehta	-	100	100
6. Mrs. Deepika A. Mehta	-	100	100
7. Mrs. Pratima Hitesh Mehta	-	100	100
8. Mrs. Rina Sudhir Meta	-	100	100
9. Mrs. Rasila S. Mehta	-	100	100
	200	900	900
B. Share Application Money	10,000	10,000	10,000
Names of the ApplicantS not indicated			
C. Names of creditors and amount of loans and advances given by them			
I. Unsecured loans - Directors	24,49,000	1,33,49,626	2,53,49,582
II. Current Liabilities (creditors for investments)			
1. M/s. Harshad S. Mehta )			
2. M/s. Ashwin S. Mehta )		19,61,58,144	18,31,42,650
3. M/s. Jyoti H. Mehta )			
D. Names of Debtors and amount of debts outstanding against them			
1. Ashwin S. Mehta	89,755		



Exhibit 2  
37

Statement showing shareholding pattern and loans and advances received and given by Fortune Holdings Pvt. Limited as on 31st March 1991, 31st March 1992 and 8th June 1992

	As on 31st March 1991 (Rs.)	As on 31st March 1992 (Rs.)	As on 8th June 1992 (Rs.)
<b>A] Paid up capital</b>	<u>200</u>	<u>200</u>	<u>200</u>
Names of the shareholders and amount of share capital subscribed by them.			
1. Smt. Pratima Hitesh. Mehta(Director)	100	100	100
2. Smt. Deepika A. Mehta (Director)	100	100	100
	<u>200</u>	<u>200</u>	<u>200</u>
<b>B] Share Application Money</b>			
Names of the applicants and amount of share application money			
1. Smt. Pratima Hitesh Mehta	<u>25,000</u>	<u>25,000</u>	<u>25,000</u>
2. Smt. Deepika A. Mehta	7,500	7,500	7,500
3. Name not identified	7,500	7,500	7,500
	10,000	10,000	10,000
<b>C] Names of the creditors and amount of loans and advances given by them to the Company</b>			
1. Unsecured Loans			
From a firm, (proprietary firms owned by relatives of directors)			
Name not disclosed in the accounts	0	24,94,20,533	26,26,56,786
2. Creditors for sharetrading	1,51,25,163	6,54,62,920	9,14,69,802
<b>D] Sources of Funds as commented upon in para 4.7 of the report of the Chartered Accountants appointed by the Special Court</b>			
M/s. Harshad S. Mehta	Dr. 1,06,67,230	Cr. 24,94,20,533	Cr. 24,24,20,533
M/s. Ashwin S. Mehta	Cr. 1,51,25,162	Cr. 2,02,36,253	Cr. 2,02,36,253
M/s. Jyoti H. Mehta	0	Cr. 4,51,83,138	Cr. 9,14,26,275
<b>TOTAL</b>	<u>Cr. 44,57,932</u>	<u>Cr. 31,48,39,924</u>	<u>Cr. 35,40,83,061</u>



STATEMENT SHOWING SHAREHOLDING PATTERN AND LOANS AND ADVANCES RECEIVED AND GIVEN BY GROWMORE LEASING AND INVESTMENTS LTD. AS ON 31ST MARCH, 1991, 31ST MARCH, 1992 AND 8TH JUNE, 1992

	As on 31.3.1991 Rs.	As on 31.3.1992 Rs.	As on 8.6.92 Rs.	
<b>A. PAID UP CAPITAL</b>	<u>200</u>	<u>900</u>	<u>900</u>	
Names of shareholders and amount of capital subscribed by them				
1. Harshad S. Mehta (Director)	100	100	100	
2. Ashwin S. Mehta (Director)	100	100	100	
3. Sudhir S. Mehta		100	100	
4. Hitesh S. Mehta		100	100	
5. Mrs. Jyoti H. Mehta		100	100	25,
6. Mrs. Deepika A. Mehta		100	100	7,
7. Mrs. Pratima Hitesh Mehta		100	100	7,
8. Mrs. Rina Sudhir Mehta		100	100	0,0
9. Mrs. Rasila S. Mehta		100	100	
	<u>200</u>	<u>900</u>	<u>900</u>	
<b>B. Share Application Money</b>	<u>20,000</u>	<u>20,000</u>	<u>20,000</u>	0,53
Names of the Applicant and amount of share application money				
1. Harshad S. Mehta	12,500	12,500	12,500	2,92
2. Ashwin S. Mehta	7,500	7,500	7,500	
	<u>20,000</u>	<u>20,000</u>	<u>20,000</u>	1,533
<b>C. Names of creditors and amount of loans and advances given by them</b>				253
I. Unsecured loans				
1. Ashwin S. Mehta	5,000	5,000	5,000	138
2. Growmore Research & Assets Management Ltd.	2,97,48,000	3,00,29,593	3,00,29,593	924
3. M/s. Harshad S. Mehta	46,77,64,630	66,06,99,684	62,01,15,650	
4. M/s. Jyoti H. Mehta	-	26,05,04,314	25,06,82,690	
II. Current Liabilities				
1. Orion Travels Pvt. Ltd.	27,400	4,25,491	5,29,791	
2. Cascade Holdings Pvt. Ltd.	-	3,000	3,000	
<b>D. Names of Debtors and amount of debts outstanding against them</b>				
1. M/s. Ashwin S. Mehta	40,70,27,006	7,61,691	46,97,329	





EXC4 39  
Exhibit 'C'

Statement showing shareholding pattern and loans and advances received and given by Orion Travels Pvt. Limited as on 31st March 1991, 31st March 1992 and 8th June 1992

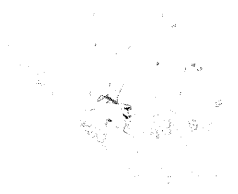
	As on 31st March 1991 (Rs.)	As on 31st March 1992 (Rs.)	As on 8th June 1992 (Rs.)
<b>A] Paid up capital</b>	<u>10,200</u>	<u>10,200</u>	<u>10,200</u>
Names of the shareholders and amount of share capital subscribed by them.			
1. Shri Ajay N. Khandher	100	100	100
2. Shri Pravinchandra C. Shah	100	100	100
3. Shri Ashwin S. Mehta	5,000	5,000	5,000
4. Shri Harshad S. Mehta	5,000	5,000	5,000
	<u>10,200</u>	<u>10,200</u>	<u>10,200</u>
<b>B] Share Application Money</b> (Names of the applicants not specified)	5,10,000	5,10,000	5,10,000
<b>C] Names of the creditors and amount of loans and advances given by them to the Company</b>			
1. Unsecured Loans	1,91,35,276	4,13,82,985	0
2. Creditors for investments	0	21,21,68,085	5,13,18,697
<b>D] Sources of Funds as commented upon in para 4.5 of the report of the Chartered Accountants appointed by the Special Court</b>			
M/s. Harshad S. Mehta	Cr. 1,90,69,248	Cr. 3,67,67,604	Dr. 2,90,57,066
M/s. Ashwin S. Mehta	Dr. 1,30,82,030	Cr. 21,15,380	Cr. 37,89,629
M/s. Jyoti H. Mehta	0	Cr. 21,21,36,084	Cr. 4,74,97,068
<b>TOTAL</b>	<u>Cr. 59,87,218</u>	<u>Cr. 25,10,19,068</u>	<u>Cr. 2,22,29,631</u>



40

**STATEMENT SHOWING SHAREHOLDING PATTERN AND LOANS AND ADVANCES RECEIVED  
AND GIVEN BY CASCADE HOLDINGS PVT. LTD. AS ON 31ST MARCH, 1991,  
31ST MARCH, 1992 AND 8TH JUNE, 1992**

	As on 31.3.1991 Rs.	As on 31.3.1992 Rs.	As on 8.6.92 Rs.
<b>A. PAID UP CAPITAL</b>	<u>200</u>	<u>200</u>	<u>200</u>
<b>Names of shareholders and amount of capital subscribed by them</b>			
1. Mrs. Jyoti H. Mehta (Director)	100	100	100
2. Mrs. Deepika A. Mehta (Director)	100	100	100
	<u>200</u>	<u>200</u>	<u>200</u>
<b>B. Share Application Money</b>	<u>25,000</u>	<u>25,000</u>	<u>25,000</u>
<b>Names of the Applicants not indicated</b>			
<b>C. Names of creditors and amount of loans and advances given by them</b>			
<b>I. Unsecured loans</b>			
1. From firms (Proprietor of such firms are relatives of directors)	-	25,78,74,963	-
<b>II. Current Liabilities</b>			
1. M/s. Ashwin S. Mehta (creditor for share trading)	1,50,73,302	-	12,03,00,950
<b>D. Names of Debtors and amount of debts outstanding against them</b>			
1. M/s. Harshad S. Mehta	1,11,47,440	17,61,191	-
2. Growmore Leasing & Investments Ltd.	-	3,000	-
3. Creditors for investment	-	-	1,90,45,059



41

**STATEMENT SHOWING SHAREHOLDING PATTERN AND LOANS AND ADVANCES RECEIVED  
AND GIVEN BY HARSH ESTATES PVT. LTD. AS ON 31ST MARCH, 1991, 31ST MARCH, 1992  
AND 8TH JUNE, 1992**

	As on 31.3.1991 Rs.	As on 31.3.1992 Rs.	As on 8.6.92 Rs.
<b>A. PAID UP CAPITAL</b>	<u>10,000</u>	<u>10,000</u>	<u>10,000</u>
Names of shareholders and amount of capital subscribed by them			
1. Harshad S. Mehta	5,000	5,000	5,000
2. Ashwin S. Mehta	<u>5,000</u>	<u>5,000</u>	<u>5,000</u>
	<u>10,000</u>	<u>10,000</u>	<u>10,000</u>
<b>B. Share Application Money</b>	<u>33,50,000</u>	<u>33,50,000</u>	<u>33,50,000</u>
Names of the Applicant and amount of share application money			
1. Harshad S. Mehta	8,35,000	8,35,000	8,35,000
2. Ashwin S. Mehta	8,85,000	8,85,000	8,85,000
3. Hitesh S. Mehta	8,15,000	8,15,000	8,15,000
4. Sudhir S. Mehta	<u>8,15,000</u>	<u>8,15,000</u>	<u>8,15,000</u>
	<u>33,50,000</u>	<u>33,50,000</u>	<u>33,50,000</u>
<b>C. Names of creditors and amount of loans and advances given by them</b>			
I. Unsecured loans			
1. M/s. Harshad S. Mehta	3,91,593	4,92,99,009	-
2. M/s. J.H. Mehta	-	-	36,42,17,285
II. Current Liabilities			
1. M/s. J.H. Mehta (creditor for investments)	-	29,42,31,923	-
<b>D. Names of Debtors and amount of debts outstanding against them</b>			
1. Director-name not specified. It can be either Harshad S. Mehta or Ashwin S. Mehta	8,10,265	1,27,38,809	9,09,17,922
2. Loans & Advances receivable from			
a) Aatur Holdings Pvt. Ltd.	-	1,00,000	1,00,000
b) Growmore Research & Assets Management Ltd.	-	-	1,54,27,270



Ex 07

Exhibit 'C7'

42

STATEMENT SHOWING SHAREHOLDING PATTERN AND LOANS AND ADVANCES  
RECEIVED AND GIVEN BY AATUR HOLDINGS PVT. LTD. AS ON 31ST MARCH, 1991,  
31ST MARCH, 1992 AND 8TH JUNE, 1992

	As on 31.3.91 Rs.	As on 31.3.92 Rs.	As on 8.6.92 Rs.
A. Paid up Capital	<u>10,000</u>	<u>10,000</u>	<u>10,000</u>
Name of shareholders and amount of capital subscribed by them			
1 Harshad S. Mehta (Director)	5,000	5,000	5,000
2 Ashwin S. Mehta (Director)	5,000	5,000	5,000
B. Share Application Money Harshad S. Mehta	24,52,000	24,52,000	24,52,000
C. Name of creditors and amount of loans and advances given by them			
I Unsecured Loans			
M/s. Harshad S. Mehta	57,84,871	2,08,64,555	2,28,81,978
M/s. Ashwin S. Mehta	-	33,43,087	33,43,087
Harsh Estates Pvt. Ltd. (under same management)		1,00,000	1,00,000
II Current Liabilities			
Creditors for expenses Growmore Research & Assets Management Ltd.	1,00,464		
Creditor for investments		14,41,25,147	14,34,83,688





**STATEMENT SHOWING PAYMENT OF SOCIETY CHARGES - HARSHAD MENTA GROUP**

*Handwritten:* 23  
 12/11/21

SL. NO.	MA NO.	NAME OF ENTITY	PREMISES	BANK ON WHICH CHEQUE DRAWN	BANK A/C NO.	Periods										TOTAL				
						1995-96	1996-97	1997-98	1998-99	1999-2000	2000-2001	2000-2001	2000-2001	2000-2001	2000-2001					
						UPTO	TO	UPTO	TO	UPTO	TO	UPTO	TO	UPTO	TO	UPTO	TO	UPTO	TO	
						Rs.	Rs.	Rs.	Rs.	Rs.	Rs.	Rs.	Rs.	Rs.	Rs.	Rs.	Rs.	Rs.	Rs.	
1.	350/95	Growmore Exports Pvt. Ltd.	1207-MCV	Citibank N.A.	0756 19006	57,735/-	21,125/-	23,632/-	24,031/-	24,944/-	23,804/-	16,453/-	1,93,725/-							
2.	358/95	Harsh Estates Pvt. Ltd.	1518-MCV	-do-	630 88005	2,44,068/-	38,010/-	42,100/-	42,751/-	44,420/-	42,380/-	32,763/-	4,86,492/-							
3.	351/95	Ashwin S. Menta	1206-MCV	State Bank of Mysore	CA 1/236	94,239/-	34,482/-	38,572/-	39,223/-	40,712/-	38,852/-	30,117/-	3,16,197/-							
4.	352/95	Fortune Holdings Pvt. Ltd.	1018-MCV	-do-	CA 1/384	1,06,737/-	34,482/-	36,572/-	39,223/-	40,712/-	38,852/-	30,117/-	3,28,695/-							
5.	353/95	Harshad S. Menta	1205-MCV	-do-	CA 1/135	94,239/-	34,482/-	38,572/-	39,223/-	40,712/-	38,852/-	30,117/-	3,16,197/-							
6.	356/95	Orion Travels Pvt. Ltd.	1505-MCV	-do-	CA 1/385	96,399/-	35,202/-	39,292/-	39,943/-	41,432/-	39,572/-	30,657/-	3,22,497/-							
7.	357/95	Cascade Holdings Pvt. Ltd.	610-MCV	-do-	CA 1/383	74,340/-	27,156/-	30,324/-	30,828/-	31,980/-	30,540/-	23,661/-	2,48,829/-							
8.	354/95	Growmore Research & Assets Management Ltd.	1217-MCV	ANZ Grfindlays Bank	11488290	1,32,406/-	37,806/-	41,898/-	42,547/-	44,036/-	42,176/-	32,610/-	3,73,477/-							
9.	355/95	Growmore Leasing & Investments Ltd.	1417-MCV 1418-MCV	-do-	11513512	1,90,926/-	69,780/-	77,960/-	79,282/-	82,240/-	78,520/-	60,846/-	6,39,534/-							
10.	354/95	Linten Chambers (GRAM)	-	-do-	11488290	-	6,169/-	18,797/-	20,706/-	23,496/-	11,748/-	-	80,916/-							
11.	358/95	Rajaja Towers Bangalore (Harsh Estates)	-	Citibank	63088005	17,560/-	8,680/-	44,485/-	84,730/-	91,140/-	91,140/-	53,165/-	3,90,900/-							
						11,08,649/-	3,47,375/-	4,34,202/-	4,82,467/-	5,05,824/-	4,76,436/-	3,42,508/-	36,97,459/-							



STATEMENT SHOWING PAYMENT OF ELECTRICITY CHARGES - HARSHAD MEHTA GROUP

SL. NO.	MA NO.	NAME OF ENTITY	PREMISES	BANK ON WHICH CHEQUE DRAWN	BANK A/C NO.	1995-96										TOTAL
						UPTO	14.7.95 TO	14.3.96 TO	17.3.97 TO	20.3.98 TO	11.3.99 TO	14.3.2000 TO	2000-2001 UPTO SEPTEMBER 2000	Rs.		
1.	350/95	Growmore Exports Pvt. Ltd.	1207-MCV	Citicbank N.A.	0756 19008	9,344/-	16,107/-	24,330/-	97,777/-	53,208/-	14,041/-	-	-	2,14,807/-		
2.	358/95	Harsh Estates Pvt. Ltd.	1518-MCV	-do-	630 38005	21,595/-	69,428/-	97,533/-	1,27,853/-	84,020/-	1,00,679/-	52,684/-	-	5,53,792/-		
3.	351/95	Ashwin S. Mehta	1206-MCV	State Bank of Mysore	CA 1/226	16,715/-	71,457/-	99,767/-	85,201/-	77,832/-	71,110/-	40,705/-	-	4,62,787/-		
4.	352/95	Fortune Holdings Pvt. Ltd.	1018-MCV	-do-	CA 1/384	26,046/-	1,07,949/-	2,25,976/-	2,34,595/-	1,18,077/-	1,38,353/-	91,962/-	-	9,42,958/-		
5.	353/95	Harshad S. Mehta	1205-MCV	-do-	CA 1/135	16,715/-	71,457/-	99,767/-	85,201/-	77,832/-	71,110/-	40,705/-	-	4,62,787/-		
6.	356/95	Orion Travels Pvt. Ltd.	1505-MCV	-do-	CA 1/385	24,621/-	55,961/-	87,157/-	70,002/-	61,948/-	39,980/-	33,942/-	-	3,73,611/-		
7.	357/95	Cascade Holdings Pvt. Ltd.	610-MCV	-do-	CA 1/383	21,714/-	16,009/-	4,649/-	60,510/-	19,921/-	932/-	8,103/-	-	1,31,835/-		
8.	354/95	Growmore Research & Assets Management Ltd.	1217-MCV	ANZ Grindlays Bank	11488290	21,428/-	64,301/-	92,778/-	86,008/-	54,619/-	55,245/-	36,853/-	-	4,11,232/-		
9.	355/95	Growmore Leasing & Investments Ltd.	1417-MCV 1418-MCV	-do-	11513512	30,437/-	43,511/-	69,474/-	42,009/-	8,182/-	7,832/-	20,915/-	-	2,22,360/-		
10.	354/95	Linten Chambers (GRAM)	-	-do-	11488290	-	17,554/-	8,190/-	73,950/-	87,493/-	53,680/-	-	-	2,40,867/-		
						1,88,615/-	5,33,731/-	8,09,621/-	9,63,106/-	6,43,132/-	5,52,962/-	3,25,869/-	-	40,17,036/-		

46  
15/11/15



BEFORE THE SPECIAL COURT CONSTITUTED UNDER  
THE SPECIAL COURT (TRIAL OF OFFENCES RELATING  
TO TRANSACTIONS IN SECURITIES) ACT, 1992

MISCELLANEOUS PETITION NO. 4 OF 2001

THE CUSTODIAN

... PETITIONER

VERSUS

M/S GROWMORE EXPORTS PVT LTD & ORS.

... RESPONDENTS

I, M. P. Purushu, Officer on Special Duty, in the office of the Petitioner and a Constituted Attorney of the Petitioner, having my office at 8th Floor, Nariman Bhavan, Nariman Point, Mumbai, do hereby state on solemn affirmation as under :-

1. I say that I am employed in the office of the Petitioner as Officer on Special Duty and well conversant with the facts of the case and able to depose to the same.

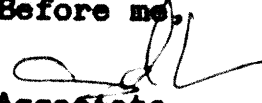
2. I say that the Petition is being filed for a direction that the Petitioner be permitted to sell the properties as prayed, for cost and other reliefs as prayed for in the petition.

3. I repeat, reiterate and confirm each and every statement and submission made in the Petition as the same is specifically set out herein and formed part of this present affidavit. I crave leave to refer to and rely upon the said Petition when produced.

4. In the circumstances, I pray that the Petition be made absolute with costs.

Solemnly affirmed at Bombay )  
 on this 13th day of March, 2001 )



Before me,  
  
 Associate  
 Special Court, Bombay.

for Pravin Mehta & Mithi & Co.

  
 Partner  
 (Advocate for the Custodian)



12

3

BEFORE THE SPECIAL COURT AT BOMBAY  
CONSTITUTED UNDER THE SPECIAL COURT  
(TRIAL OF OFFENCES RELATING TO  
TRANSACTIONS IN SECURITIES) ACT,  
1992  
=====

MISC. PETITION NO. 4 OF 2001

THE CUSTODIAN ... PETITIONER

VERSUS

M/S GROWMORE EXPORTS PVT LTD & ORS.  
... RESPONDENTS

AFFIDAVIT OF MR. M. P. PURUSHU IN  
SUPPORT OF THE PETITION.  
=====

DATED THIS 3<sup>rd</sup> DAY OF March, 2001

MESSRS PRAVIN MENTA & MITHI & CO.  
ADVOCATES FOR THE PETITIONER  
4TH FLOOR, ORICON HOUSE,  
12/14, K. DUBASH MARG,  
FORT, BOMBAY - 400 023.  
C:\CUSTODIA\AFFIDAVI\BHORUKA\RP





*Amandeep*

BEFORE THE SPECIAL COURT CONSTITUTED  
UNDER THE SPECIAL COURT (TRIAL OF  
OFFENCES RELATING TO TRANSACTIONS IN  
SECURITIES) ACT, 1992.

MISCELLANEOUS PETITION NO. *4* OF 2001

CUSTODIAN ..PETITIONER

VERSUS

M/S. GROWMORE EXPORTS PVT. LTD.  
..RESPONDENTS

PETITION

Dated this *13th* day of *April* 2001.

M/s. Pravin Mehta & Mithi & Co.,  
Advocates & Solicitors  
4th floor, Orion House,  
12/14, K. Dubash Road, Fort,  
Mumbai 400 001.  
C:\CUSTODIA\APPLICAT\GROWMORE\RP